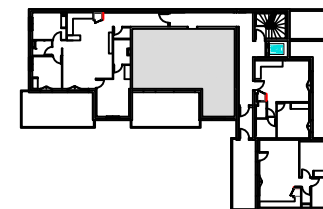


plan et surfaces pouvant être modifiés pour des contraintes techniques

COFIM

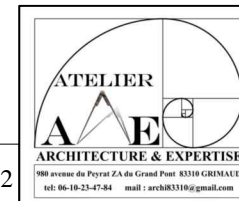
LES PORTES DU SOLEIL
PORTE LES VALENCE

ETAGE 1



Appartement 1-03

| Surfaces | T3 |
|------------------|----------------------|
| séjour / cuisine | 35.95 m ² |
| chambre 1 | 13.90 m ² |
| toil. 1 | 4.45 m ² |
| wc | 1.95 m ² |
| deg | 0.85 m ² |
| chambre 2 | 10.20 m ² |
| TOTAL | 67.30m ² |
| terrasse | 22.00 m ² |



03/01/2022